



# Compact equipment is crucial, but how do you get landscapers to choose your brand?

Don't lose a potential sale! Since outdoor living spaces are becoming staples in remodeling projects, landscaping crews are comparing and evaluating their compact equipment to get the job done efficiently.

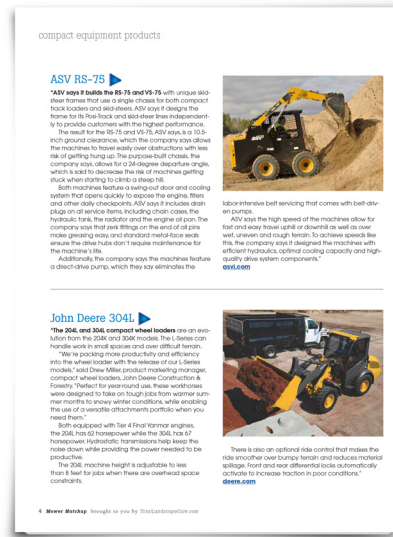
Total Landscape Care's **Compact Equipment Guide**, gives them all the finer details when purchasing their compact equipment to get the most return on investment.

Our extensive coverage will include:

1. Compact excavators
2. Skid steers
3. Compact track loaders
4. Radial lift vs. vertical lift
5. Equipment Specs



As an advertiser, your product description will be embedded in high-value content across all of TLC's channels.



**f Facebook**  
63.3K Likes

**@ Newsletter**  
13.8K Monthly Subscriptions  
20% Monthly Open Rate  
41% Click-Throughs

**TLC.com**  
203.6K Monthly Pageviews  
148.1K Unique Visits



**Advertisers receive:**

- 1 full-page ad  
E-book full-page print ad specifications page size of 8.5" x 11" with minimum image resolution of 150 ppi
- Featured Product Listing  
Advertisers must provide high-res photo at least 3.5 inches at 300 dpi and 250-word description. Please note that copy will be edited for space and clarity.
- Download forms from quality prospects

**E-book promoted on:**

- Totallandscapecare.com
- TLC newsletter
- Social Media

**Total Investment: \$3,000 Net**

**Close Date: November 1st, 2018**

Landscapers are too busy to research multiple websites for the information they need. They go to TLC's **Compact Equipment Guide** to compare specs on various landscape brands all in one central location.

**Talk to your Sales Representative today to find out how we can help you maintain your visibility during this critical sales period.**